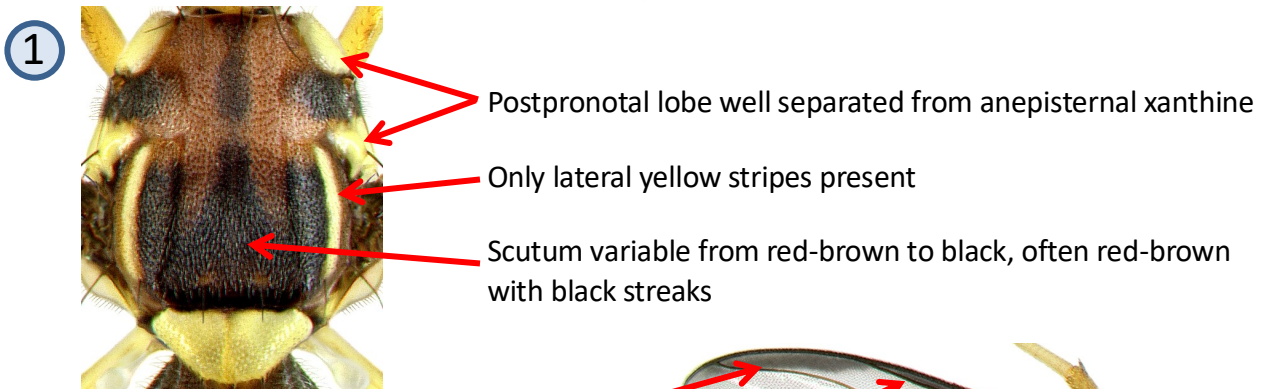
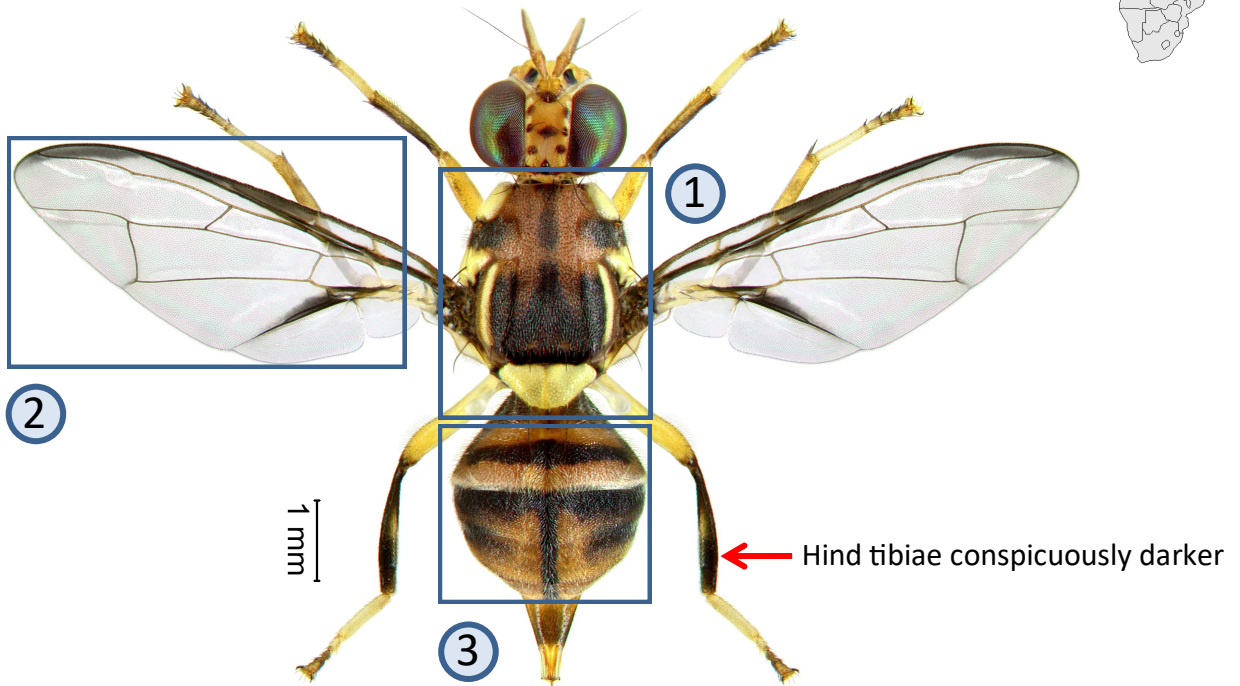
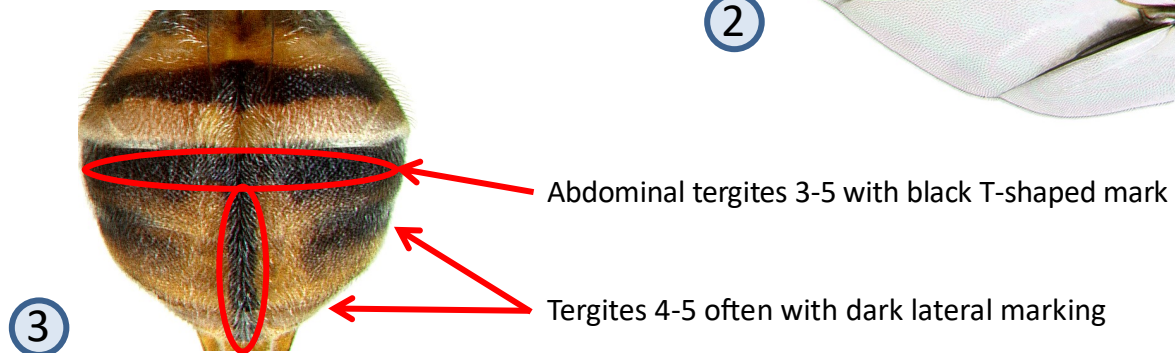
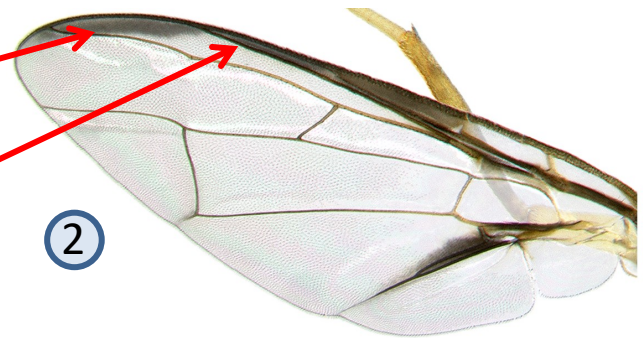


Bactrocera dorsalis (Hendel)



No sharp broadening or apical spot

Costal band at anterior margin of wing narrow



Oriental fruit fly, in Africa formerly called African Invader fly. Medium size (wing length 5.2-6.9 mm). Highly polyphagous and serious pest of numerous fruits of economic importance. Invasive species now found in most of sub-Saharan Africa. Both sexes can be trapped with liquid protein baits. Males are strongly attracted to methyl eugenol.

Further information see: <http://projects.bebif.be/fruitfly/taxoninfo.html?id=161> Limitation: the species sheets only show differentiation between major pest species but do not take into account similarities/differences between ALL fruit infesting tephritids in West Africa. Copyright: text & images G. Goergen, IITA. Acknowledgements: Thanks are due to M. De Meyer, MRAC for help provided in the conceptualization of the sheets.