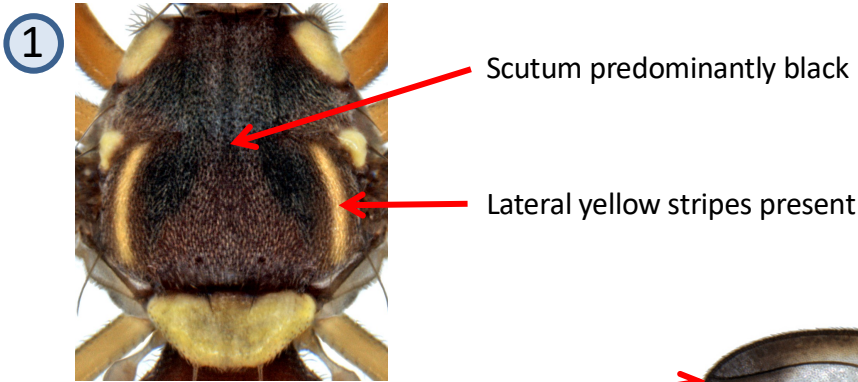
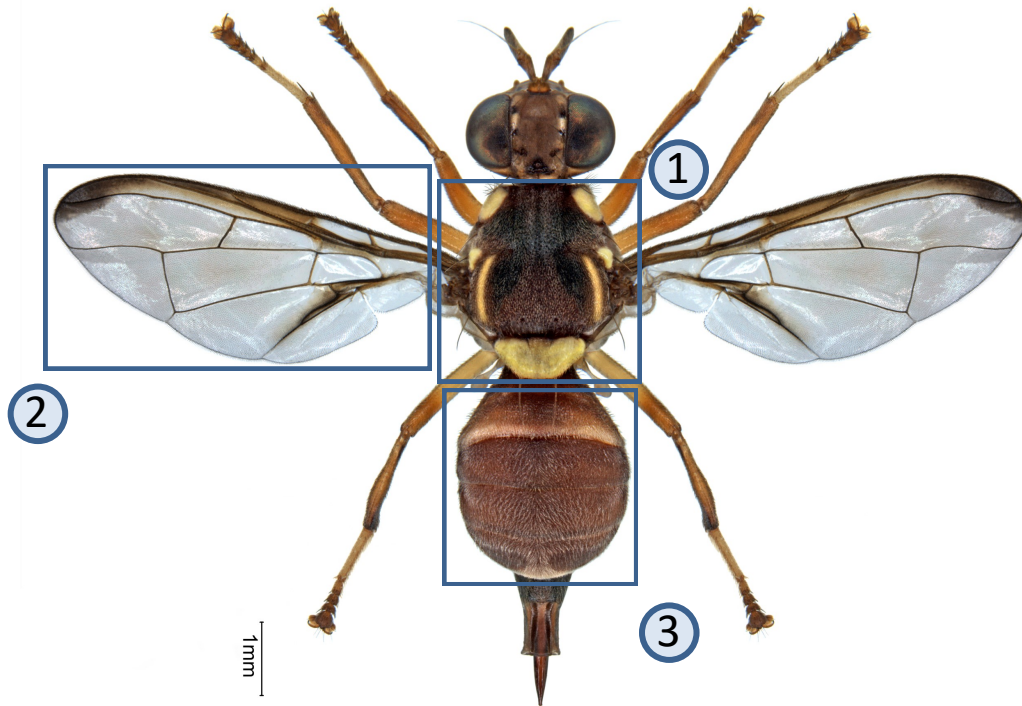
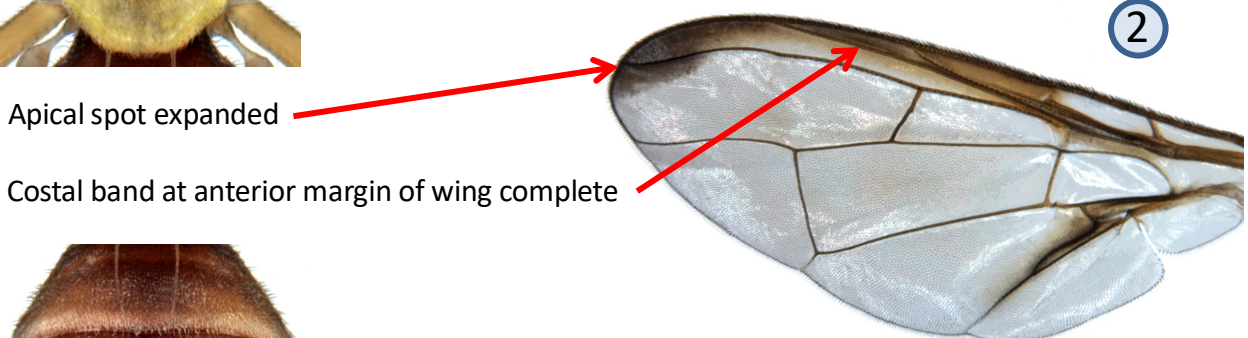


Bactrocera latifrons (Hendel)



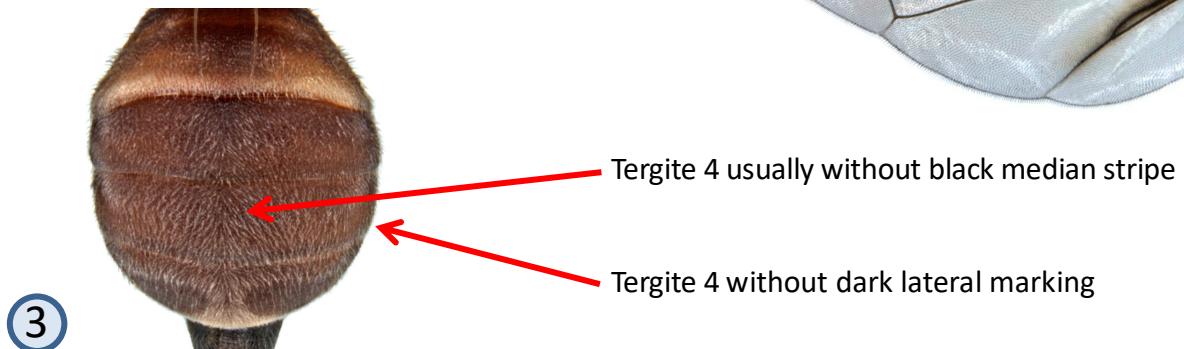
Scutum predominantly black

Lateral yellow stripes present



Apical spot expanded

Costal band at anterior margin of wing complete



Tergite 4 usually without black median stripe

Tergite 4 without dark lateral marking

Solanum fruit fly. Medium size (wing length 4.4-6.1 mm). Primarily found on Solanaceae where it is a serious pest of *Capsicum* and *Solanum* crops. Of Asiatic origin, the species has become invasive to tropical Africa yet with limited distribution in Kenya and Tanzania. Both sexes can be trapped with liquid protein baits. Males are attracted by latilure enhanced with cade oil.

Further information see: <http://projects.bebif.be/fruitfly/taxoninfo.html?id=371> Limitation: the species sheets only show differentiation between major pest species but do not take into account similarities/differences between ALL fruit infesting tephritids in West Africa. Copyright: text & images G. Goergen, IITA. Acknowledgements: Thanks are due to M. De Meyer, MRAC for help provided in the conceptualization of the sheets.