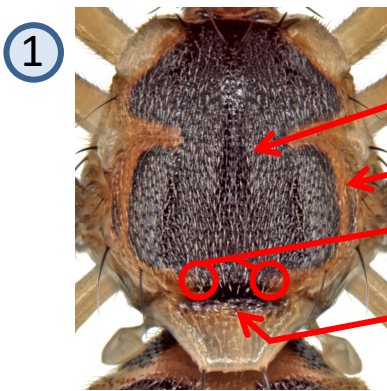
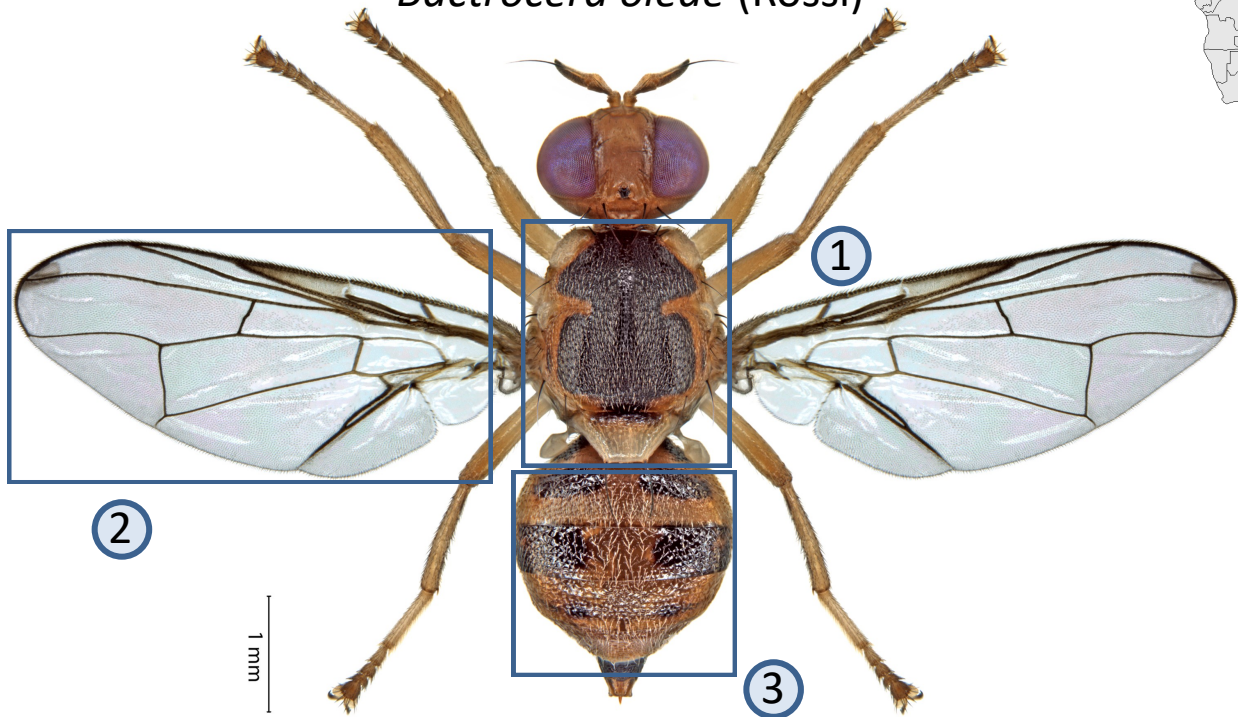


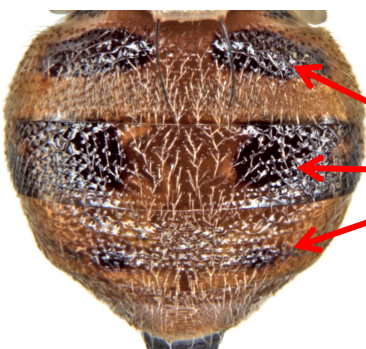
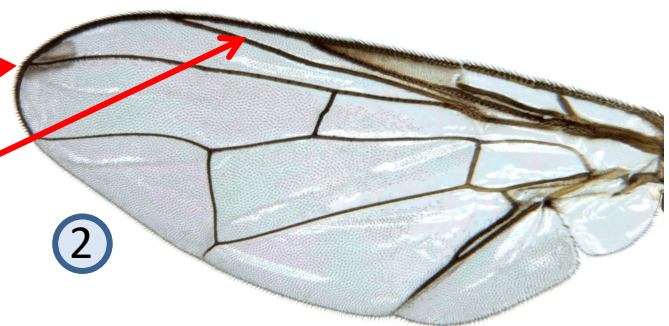
Bactrocera oleae (Rossi)



- Scutum variable from red-brown to black
- No lateral or median yellow stripes present
- No prescutellar bristles present
- Base of scutellum usually black

Small apical spot

No costal band at anterior margin of wing



Abdominal tergites with dark lateral marking

Olive fruit fly. Medium size (wing length 4.3-5.2 mm). Highly specialized pest on wild and domesticated olives where it can cause important damage. Widespread in eastern and southern Africa, but yet absent from West Africa. Both sexes can be trapped with liquid protein baits. Males are attracted to Spiroketal lure.