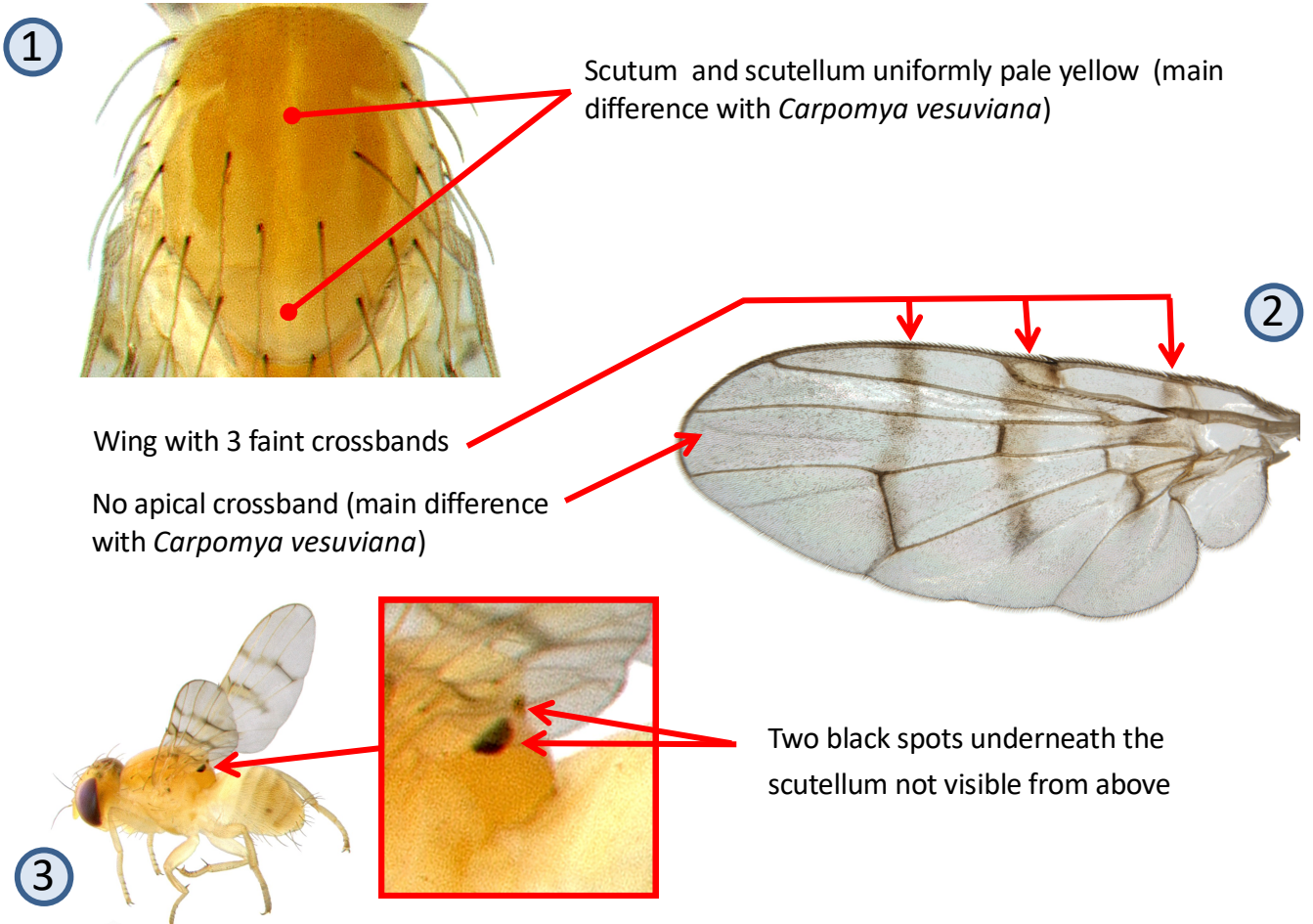
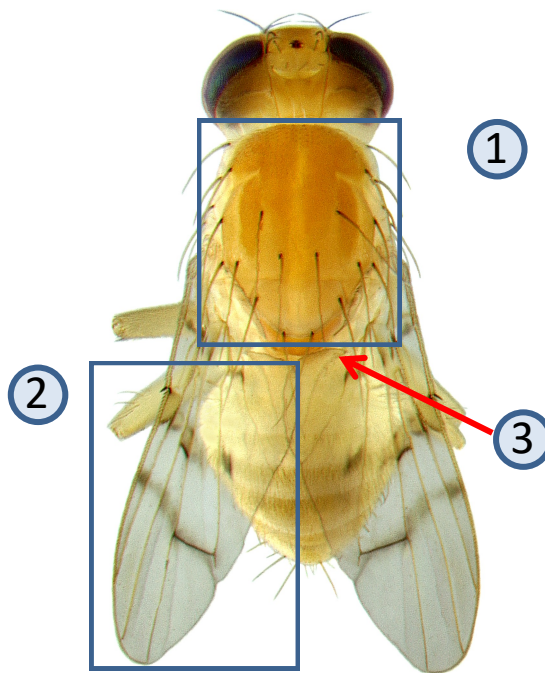


# *Carpomya incompleta* (Becker)



Scutum and scutellum uniformly pale yellow (main difference with *Carpomya vesuviana*)

Wing with 3 faint crossbands  
No apical crossband (main difference with *Carpomya vesuviana*)

Two black spots underneath the scutellum not visible from above

Jujube fruit fly. Small to medium size (wing length 2.9-3.4 mm). Species associated with fruits of domesticated and wild jujube (*Ziziphus* spp.) (Rhamnaceae). Common in northeast Africa and now recorded in the drier areas of West Africa. Both sexes can be trapped with liquid protein baits. Males lures are not known.

**Limitation:** the species sheets only show differentiation between major pest species but do not take into account similarities/differences between ALL fruit infesting tephritids in West Africa. **Copyright:** text & images G. Goergen, IITA. **Acknowledgements:** Thanks are due to M. De Meyer, MRAC for help provided in the conceptualization of the sheets.