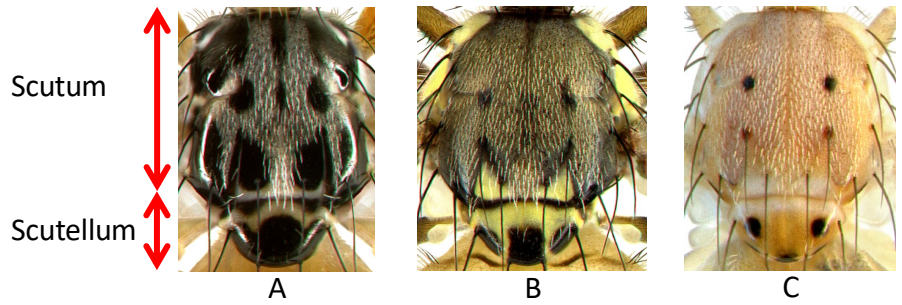
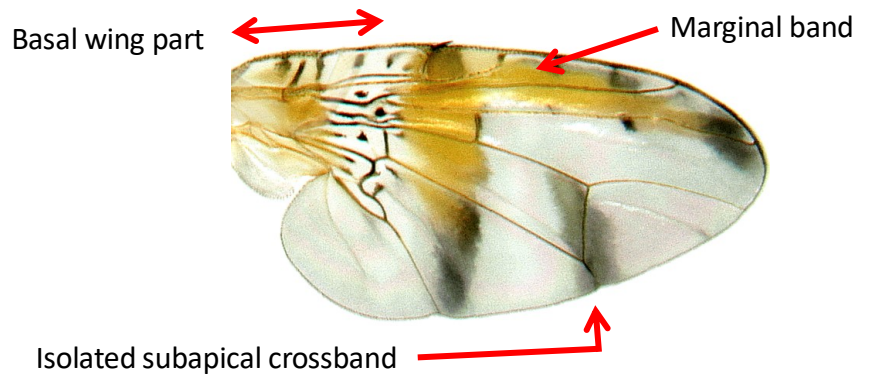


Genus *Ceratitis*

Thorax: Scutum of various color ranging from black to pale orange. Apical margin of scutellum consisting basically of 3 zones with black markings expanding to various degrees: A) fused B) isolated and C) reduced to small spots.



Wing: Basal part of wing with characteristic pattern of streaks and spots, giving the wing a reticulate appearance. Bands predominantly of yellow and brown color well developed. Marginal band continuous or interrupted and subapical cross-band often isolated.

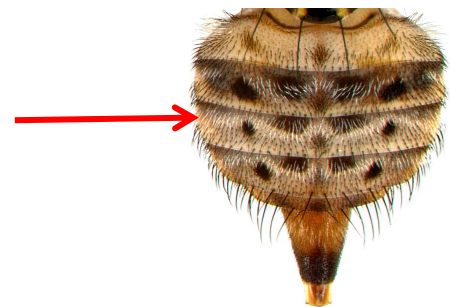


Main **Subgenera** with species treated for the project region:

Subgenus *Pardalaspis*

- *Ceratitis (Pardalaspis) breinii*
- *Ceratitis (Pardalaspis) ditissima*
- *Ceratitis (Pardalaspis) punctata*

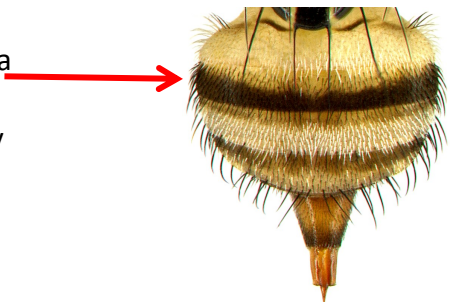
Abdomen with spot pattern, either well defined or unclear



Subgenus *Pterandrus*

- *Ceratitis (Pterandrus) anonae*
- *Ceratitis (Pterandrus) colae*
- *Ceratitis (Pterandrus) fasciventris*
- *Ceratitis (Pterandrus) quilicii*
- *Ceratitis (Pterandrus) rosa*

Abdomen mostly yellow with a black transversal band on tergite 3 (arrow) and pale grey transversal bands on tergite 2 and 4



Subgenus *Ceratitis* & *Ceratalaspis*

- *Ceratitis (Ceratitis) capitata*
- *Ceratitis (Ceratalaspis) cosyra*
- *Ceratitis (Ceratalaspis) quinaria*
- *Ceratitis (Ceratalaspis) silvestrii*

Abdomen yellow with silver grey transversal bands on tergite 2 and 4

