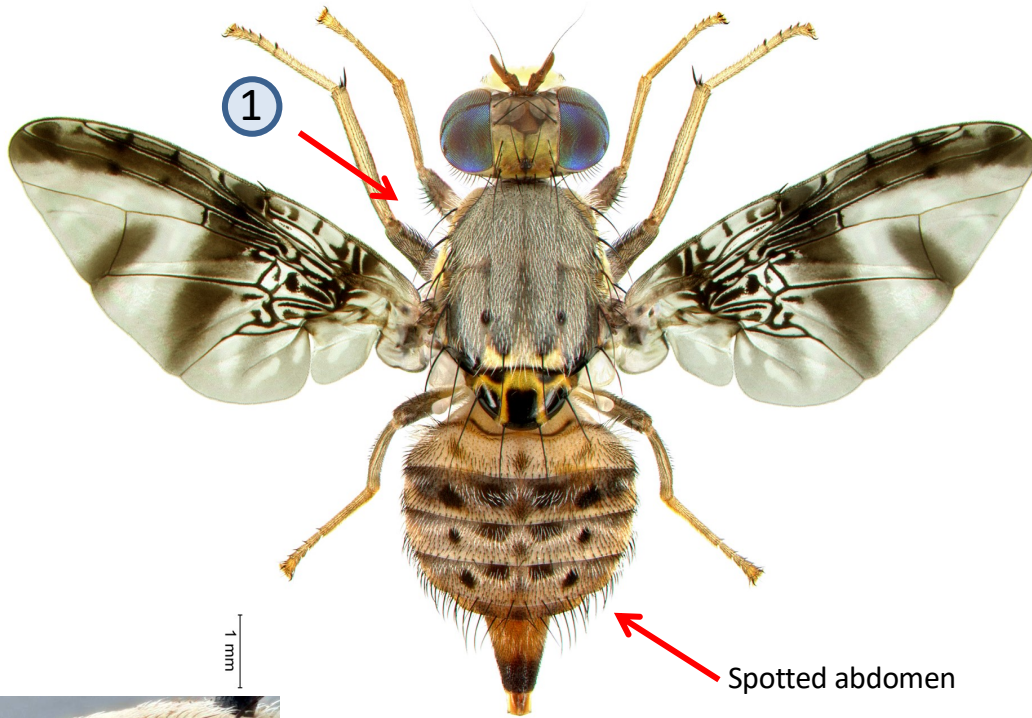
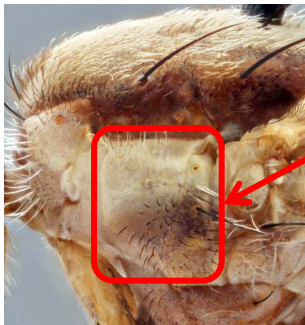


# *Ceratitis ditissima* (Munro)

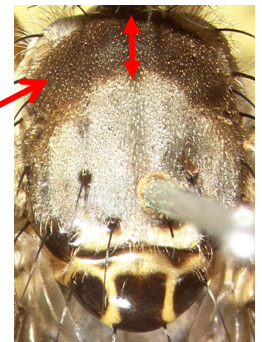


\*\*  
①



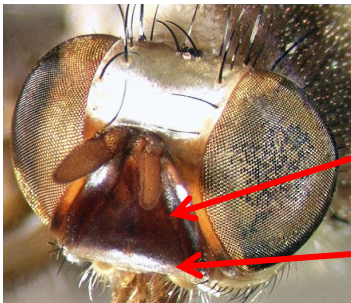
Pilosity of anepisternum partly dark in lower half (main difference with female specimens of *Ceratitis punctata*)

\*



Male: Anterior part of scutum with sickle-shaped dark coloration contrasting with the dull brown color of mesonotum

\*



Male head: face dark red whereas yellow for female specimens of the same species

Lower mouth margin white (main difference with male specimens of *Ceratitis punctata*)

Fruit fly of medium size (body length 6.0-7.5 mm). Polyphagous species found on mango, citrus and cocoa. Further host range records are still scanty. Widespread in western and central Africa. The species can easily be confused with *Ceratitis punctata*. Both sexes can be attracted by liquid protein bait products. Males can be trapped with methyl eugenol.

Further information see: <http://projects.bebif.be/fruitfly/taxoninfo.html?id=11> Limitation: the species sheets only show differentiation between major pest species but do not take into account similarities/differences between ALL fruit infesting tephritids in West Africa. Copyright: text G. Goergen, IITA; images G. Goergen, IITA, \*NHM, London & \*\*MRAC, Tervuren. Acknowledgements: Thanks are due to M. De Meyer, MRAC for help provided in the conceptualization of the sheets.