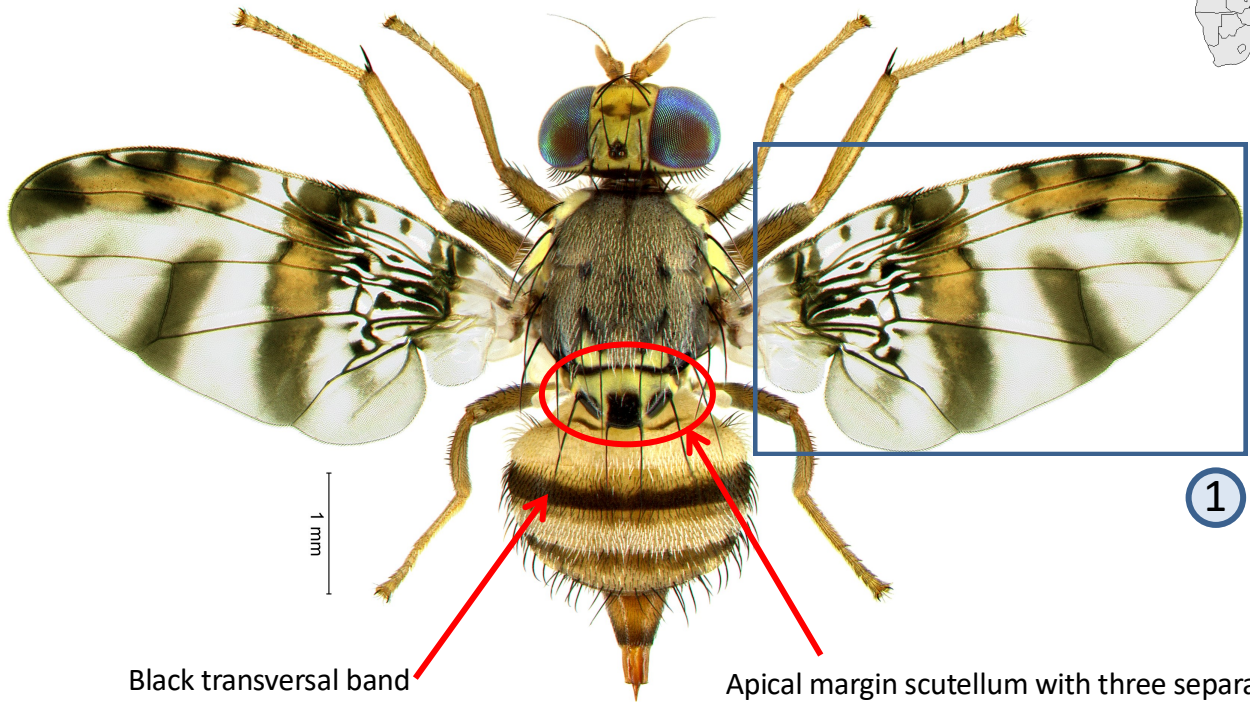


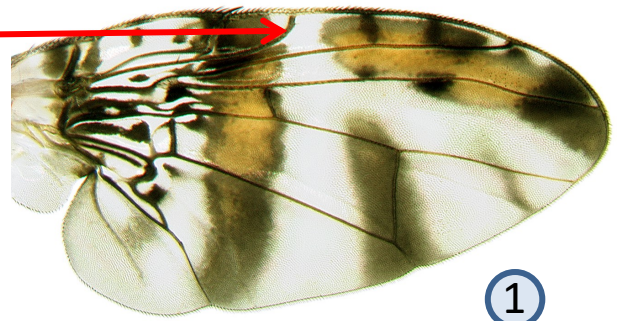
# Ceratit<sup>i</sup> anonae Graham



Black transversal band

Apical margin scutellum with three separated black spots

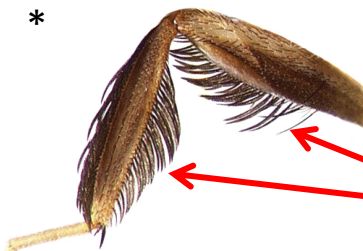
Marginal band interrupted at anterior part of discal band



### **FAR species complex!**

Male specimens are needed for reliable identification. See also *C. colae*, *C. fasciventris*, *C. quilicii*, & *C. rosa*

\*



Male with thick feathering on both mid tibiae and femora (main difference with male specimens of *Ceratit<sup>i</sup> fasciventris*, *C. quilicii* & *C. rosa*)

\*



Inner edge of femur with no gap or interruption in the feathering (main difference with male specimens of *Ceratit<sup>i</sup> colae*)

Fruit fly of medium size (body length 4.4-5.9 mm). Polyphagous species recorded from a number of commercial and wild hosts. Occurs throughout sub-Saharan Africa between 12°N and 10°S latitude. Both sexes can be attracted by protein bait products. Males respond to trimedlure.

Further information see: <http://projects.bebif.be/fruitfly/taxoninfo.html?id=56> Limitation: the species sheets only show differentiation between major pest species but do not take into account similarities/differences between ALL fruit infesting tephritids in West Africa. Copyright: text G. Goergen, IITA; images G. Goergen, IITA & \*NHM, London. Acknowledgements: Thanks are due to M. De Meyer, MRAC for help provided in the conceptualization of the sheets.