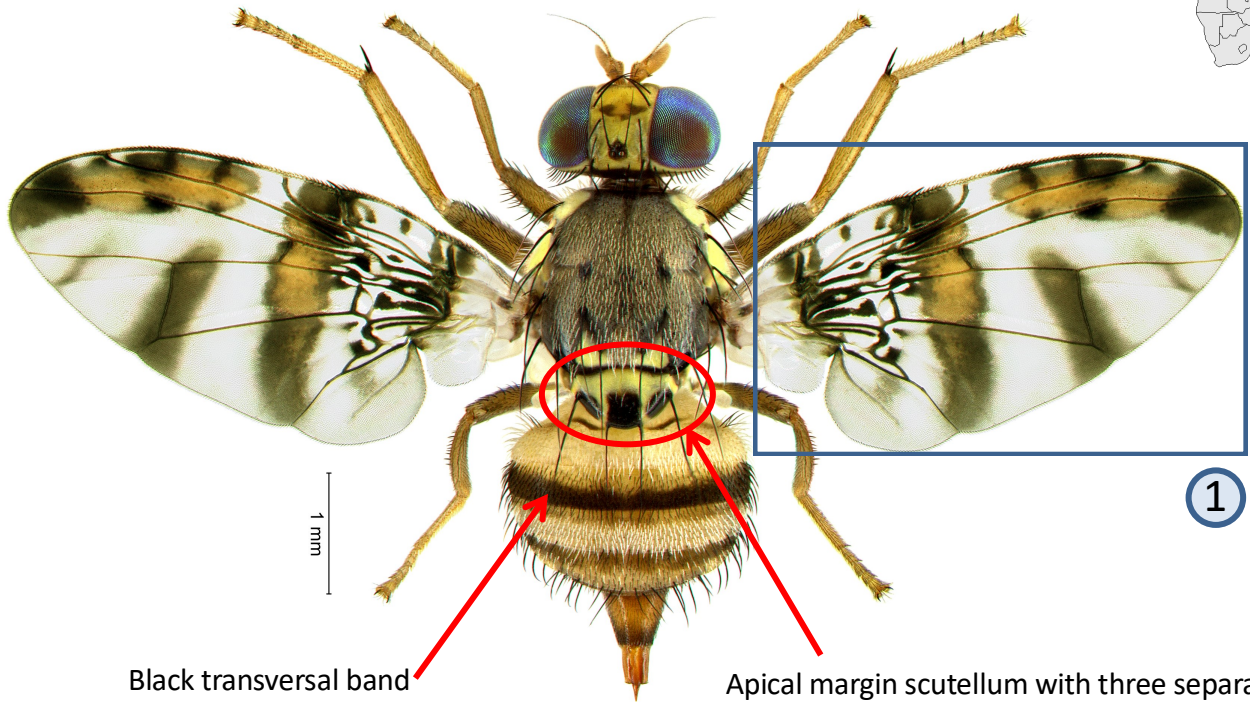


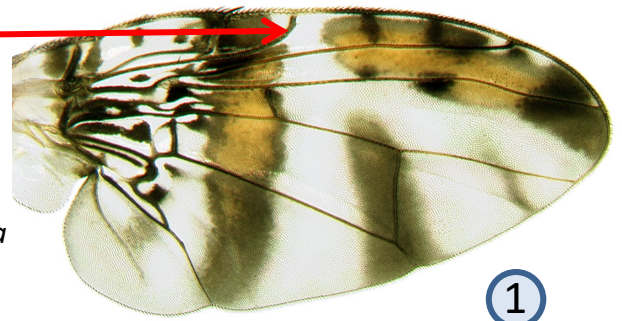
Ceratitis colae Silvestri



Black transversal band

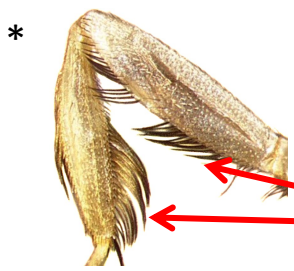
Apical margin scutellum with three separated black spots

Marginal band interrupted at anterior part of discal band



species closely related to the FAR complex!

Male specimens are needed for reliable identification. See also *C. anonae*, *C. fasciventris*, *C. quilicii*, & *C. rosa*



Male with thick feathering on both mid tibiae and femora (main difference with male specimens of *Ceratitis fasciventris*, *C. quilicii* & *C. rosa*)



Mid femora feathering with short interruption or gap in the middle along the inner edge (main difference with male specimens of *Ceratitis anonae*)

Fruit fly of medium size (body length 4.4-5.9 mm). Stenophagous species associated with the genus *Cola*. It is mainly found in the humid regions of western Africa from Guinée Conakry till Cameroon. Both sexes can be attracted by protein bait products. Males may respond to trimedlure.

Further information see: <http://projects.bebif.be/fruitfly/taxoninfo.html?id=57> Limitation: the species sheets only show differentiation between major pest species but do not take into account similarities/differences between ALL fruit infesting tephritids in West Africa. Copyright: text G. Goergen, IITA; images G. Goergen, IITA & *NHM, London. Acknowledgements: Thanks are due to M. De Meyer, MRAC for help provided in the conceptualization of the sheets.