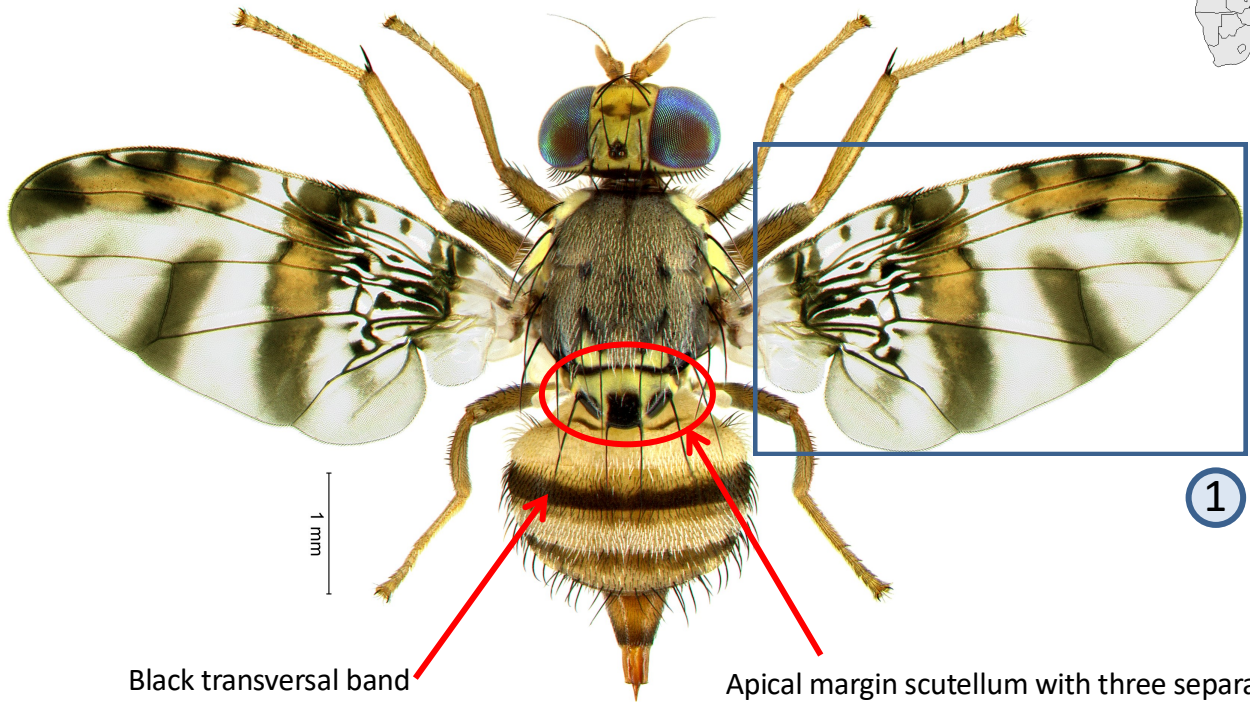


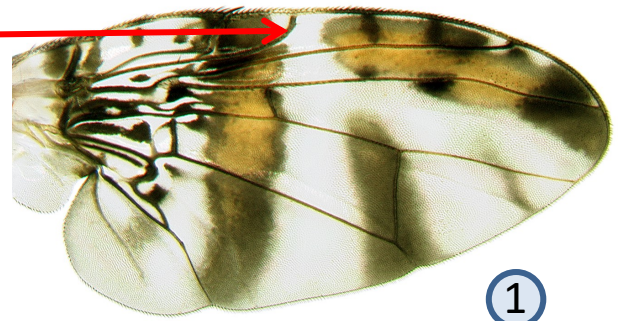
Ceratitis fasciventris (Bezzi)



Black transversal band

Apical margin scutellum with three separated black spots

Marginal band interrupted at anterior part of discal band



FAR species complex!

Male specimens are needed for reliable identification. See also *C. anonae*, *C. quilicii* & *C. rosa*

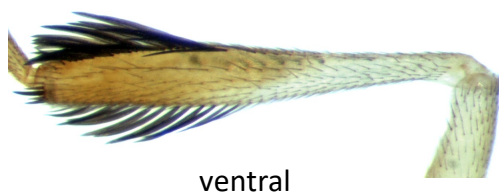
*



Male with thick feathering restricted to only mid tibiae (main difference with male specimens of *Ceratitis anonae*)

**

dorsal



ventral

Mid tibia not distinctly broadened. Feathering on dorsum restricted to 1/2 of total tibia length at most. Tibia more or less uniformly colored or anterior part partially brownish distally (main difference with male specimens of *Ceratitis quilicii* & *C. rosa*)

Fruit fly of medium size (body length 4.0-5.2 mm). Polyphagous species with numerous records on wild and economically important hosts. It is found throughout sub-Saharan Africa except for southern Africa. Both sexes can be attracted by protein bait products. Males respond to trimedlure.

Further information see: <http://projects.bebif.be/fruitfly/taxoninfo.html?id=63> Limitation: the species sheets only show differentiation between major pest species but do not take into account similarities/differences between ALL fruit infesting tephritids in West Africa. Copyright: text G. Goergen, IITA; images G. Goergen, IITA, *NHM, London & ** MRAC, Tervuren. Acknowledgements: Thanks are due to M. De Meyer, MRAC for help provided in the conceptualization of the sheets.