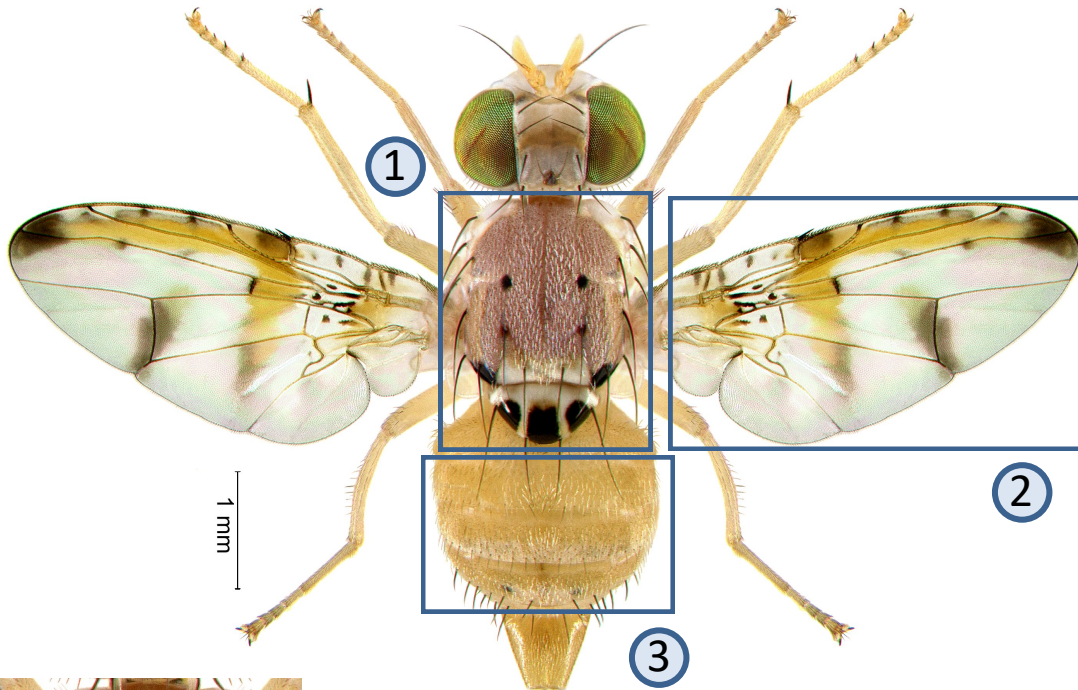
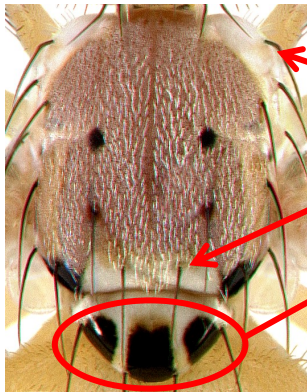


Ceratitis silvestrii Bezzi



1



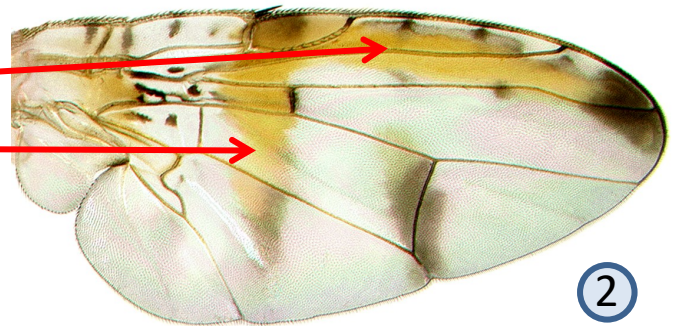
Postpronotal lobe without black spot around bristle

Prescutellar bristle without dark spot

Apical margin of scutellum with three separated black spots (main difference with *Ceratitis quinaria*)

Yellow-black band at anterior margin of wing

Yellow-black band in centre of wing



2



Abdomen yellow with silver grey transversal bands

3

Small to medium sized fruit fly (body length 3.8-4.0 mm). Polyphagous reported from a few hosts including mango. Known only from the Trans-Saharan belt in western Africa. Both sexes can be attracted by protein bait products. Males respond to terpinyl acetate. The species is very similar to *Ceratitis quinaria*. Both species co-occur in western Africa.

Further information see: <http://projects.bebif.be/fruitfly/taxoninfo.html?id=48> Limitation: the species sheets only show differentiation between major pest species but do not take into account similarities/differences between ALL fruit infesting tephritids in West Africa. Copyright: text & images G. Goergen, IITA. Acknowledgements: Thanks are due to M. De Meyer, MRAC for help provided in the conceptualization of the sheets.