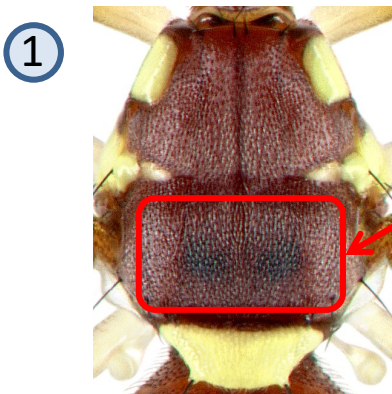
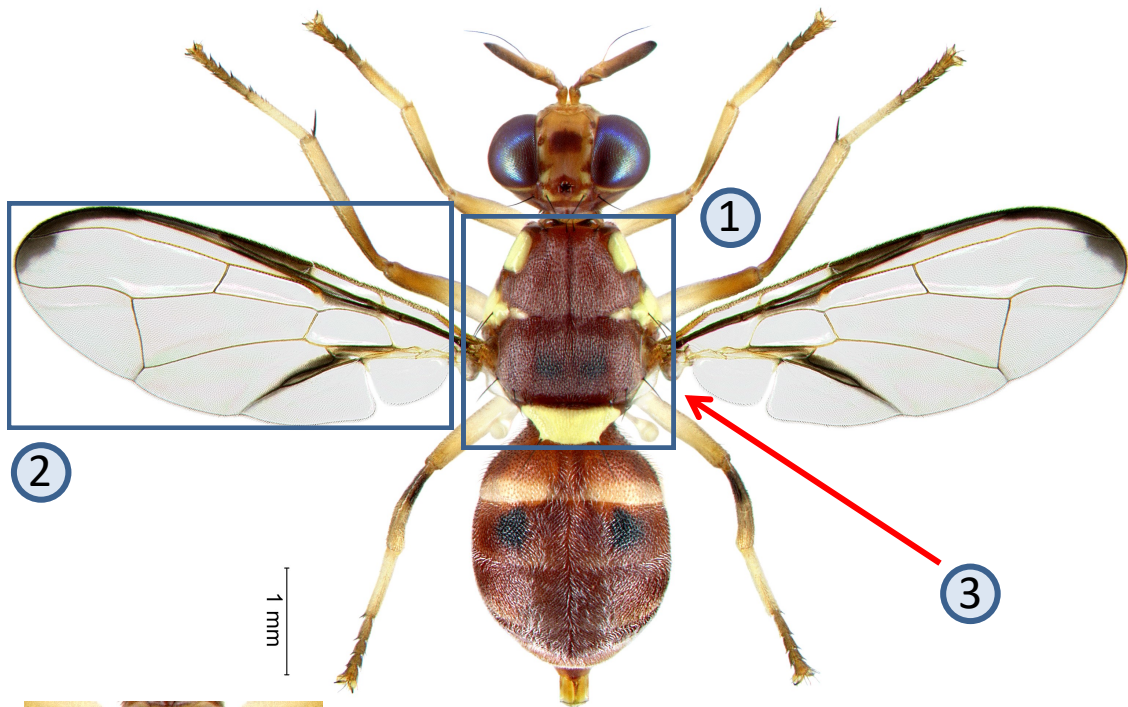




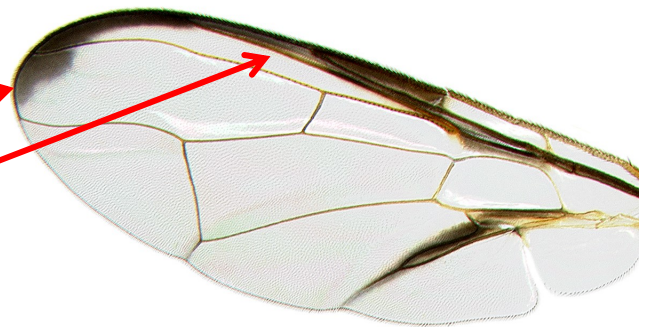
Dacus ciliatus Loew



Scutum predominantly red-brown without any yellow stripes

Spot at wing apex small

Costal band complete and narrow



Anatergite brown (main difference with *Dacus frontalis*)

Katatergite yellow

Ethiopian fruit fly, lesser pumpkin fly. Medium size (Wing length 4.4-6.0 mm). Species can easily be confused with *Dacus frontalis*. Major fruit fly pest on wild and cultivated Cucurbitaceae, but sometimes also found on Solanaceae crops. Widespread throughout sub-Saharan Africa including drier areas of Sahelian belt. Both sexes respond weakly to protein bait products.

Further information see: <http://projects.bebif.be/fruitfly/taxoninfo.html?id=272> Limitation: the species sheets only show differentiation between major pest species but do not take into account similarities/differences between ALL fruit infesting tephritids in West Africa. Copyright: text G. Goergen, IITA; images G. Goergen, IITA & *NHM, London. Acknowledgements: Thanks are due to M. De Meyer, MRAC for help provided in the conceptualization of the sheets.