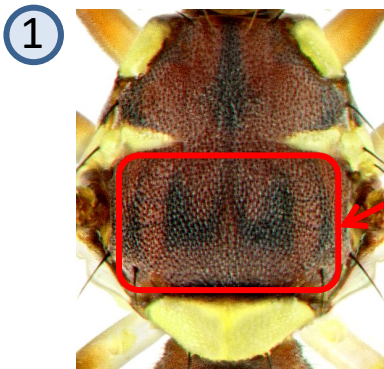
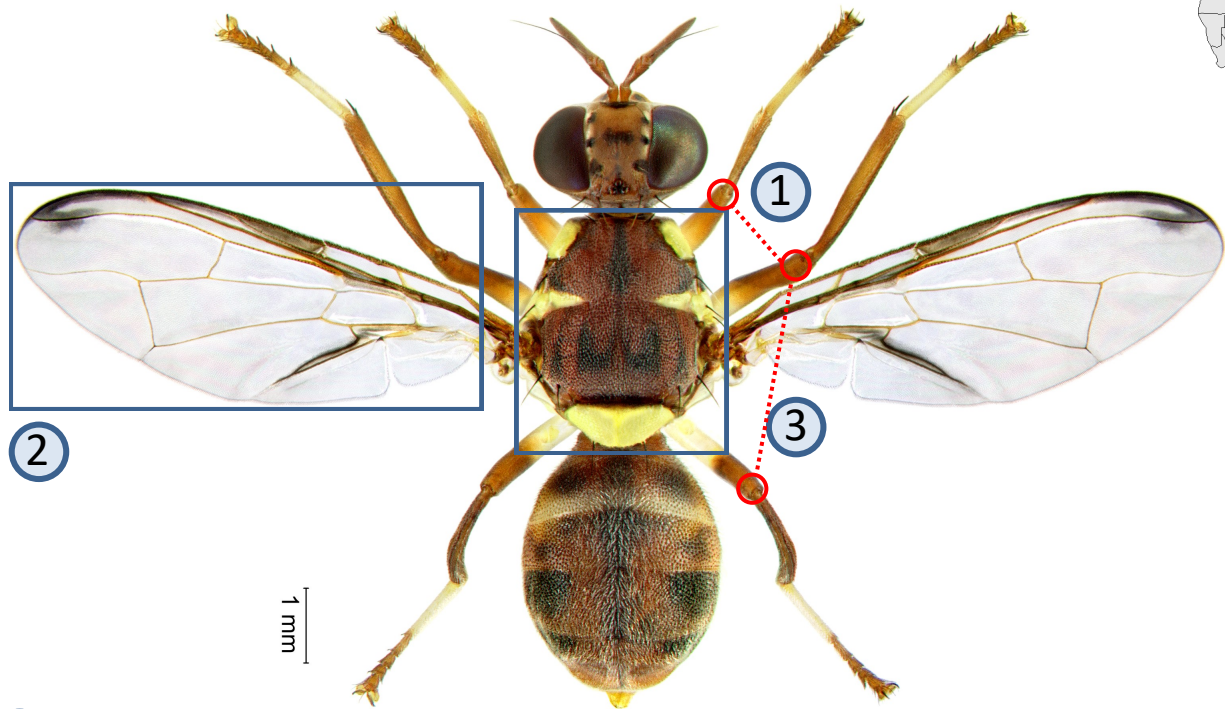




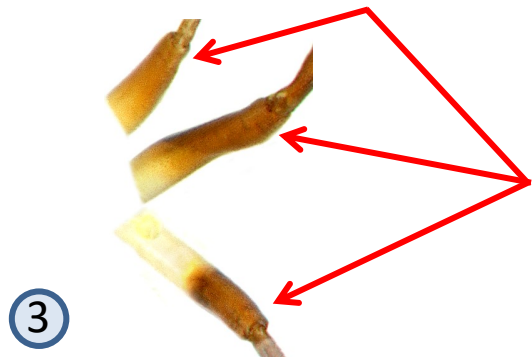
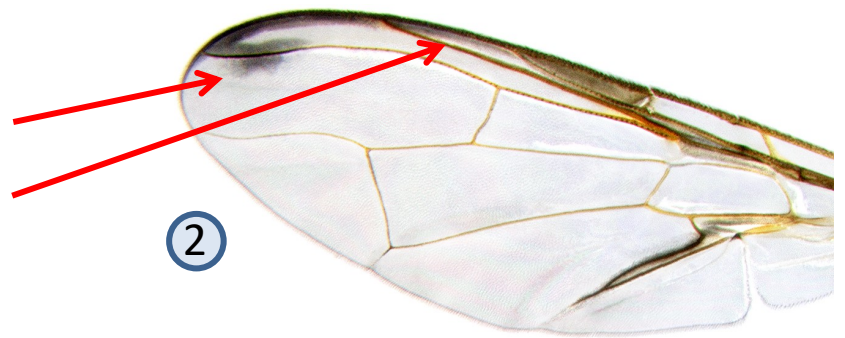
Dacus vertebratus Bezzi



Scutum predominantly red-brown without any yellow stripes

Spot at wing apex slightly expanded

Costal band complete and shallow



Fore, mid, and hind femurs bicolor, pale basally and red-brown apically

Jointed pumpkin fly, melon fly. Medium size (body length 4.8-7.5 mm). One of the main fruit fly pests of wild and cultivated Cucurbitaceae. Develops occasionally also on Solanaceae crops. Widespread throughout sub-Saharan Africa including drier areas of Sahelian belt. Both sexes respond to protein bait products. Males are attracted to vertlure.

Further information see: <http://projects.bebif.be/fruitfly/taxoninfo.html?id=296> Limitation: the species sheets only show differentiation between major pest species but do not take into account similarities/differences between ALL fruit infesting tephritids in West Africa. Copyright: text & images G. Goergen, IITA. Acknowledgements: Thanks are due to M. De Meyer, MRAC for help provided in the conceptualization of the sheets.