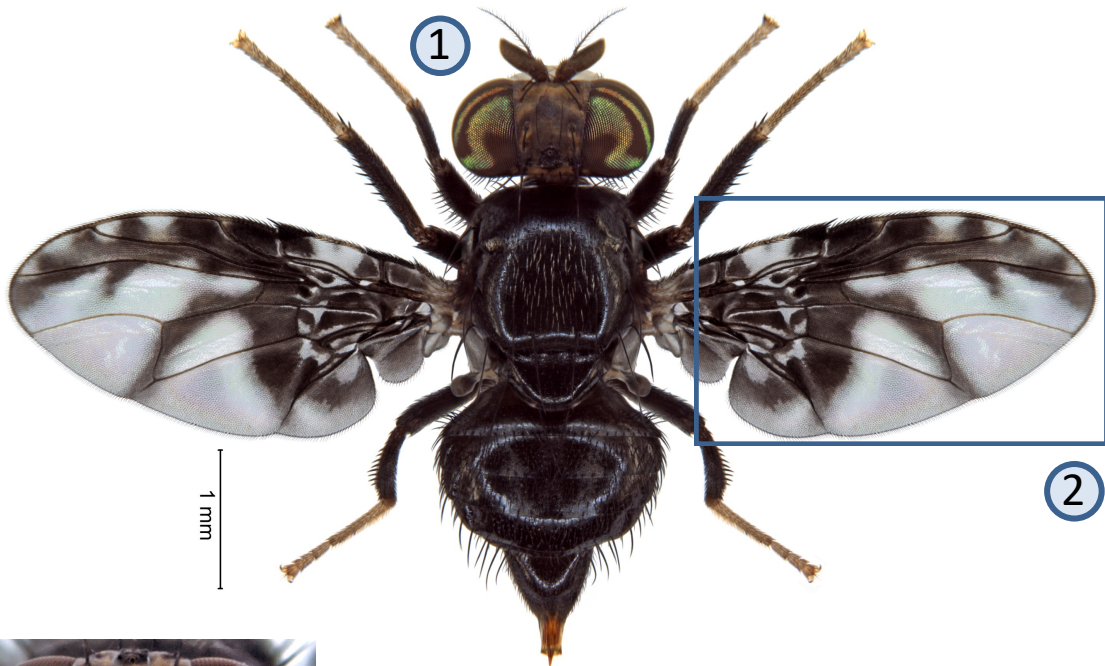
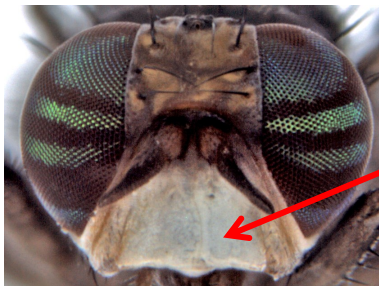


Trirhithrum coffeae Bezzi



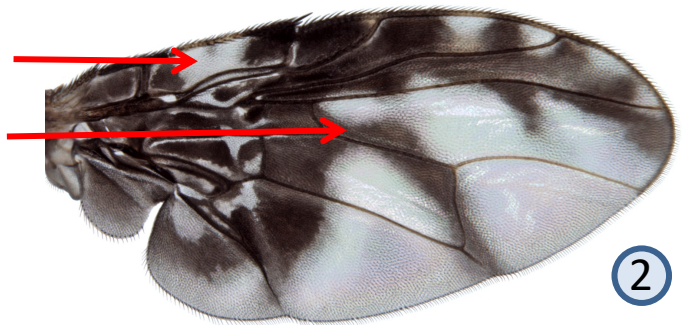
1



Lower half of face white or pale yellow

Wing pattern of female : cell "c" with hyaline band

Subapical crossband narrowly joining discal crossband, or sometimes isolated



2

3



Wing of male different: largely hyaline and with diffuse pattern

Small, dark fruit fly (wing length 2.6-3.8 mm). One of the main fruit fly pests found on coffee, both robusta and arabica. It occurs in western, central and eastern Sub-Saharan Africa. Its northern distribution does not pass the 10°N latitude, except in the Ethiopian Highlands. Males and females are attracted by protein baits.

Further information see: <http://projects.bebif.be/fruitfly/taxoninfo.html?id=122> Limitation: the species sheets only show differentiation between major pest species but do not take into account similarities/differences between ALL fruit infesting tephritids in West Africa. Copyright: text G. Goergen, IITA; images G. Goergen, IITA & *NHM, London. Acknowledgements: Thanks are due to M. De Meyer, MRAC for help provided in the conceptualization of the sheets.