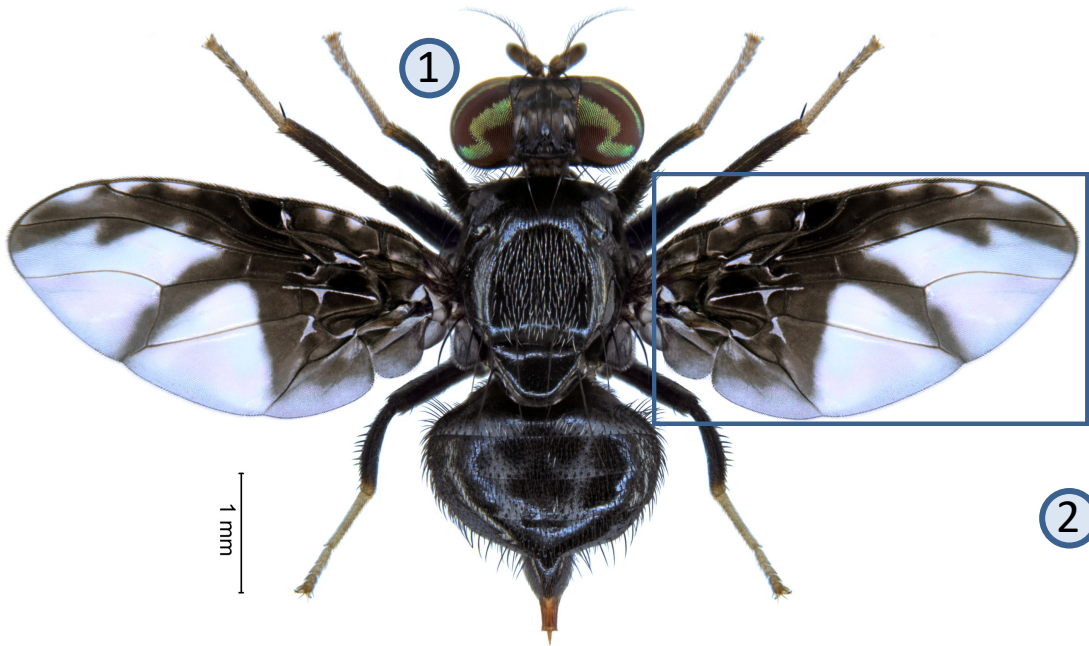
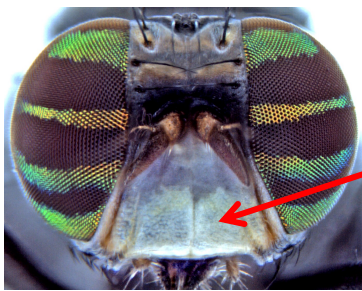




# *Trirhithrum nigerrimum* Bezzi



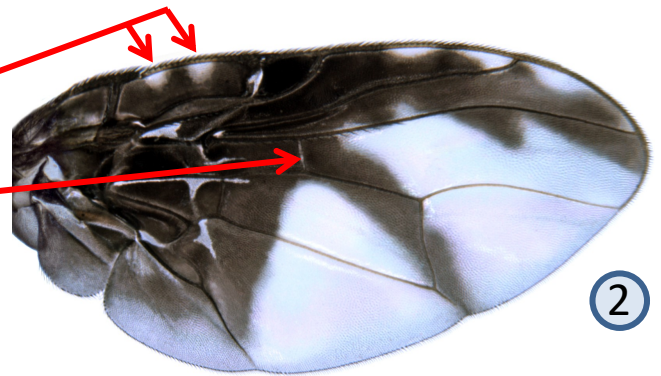
1



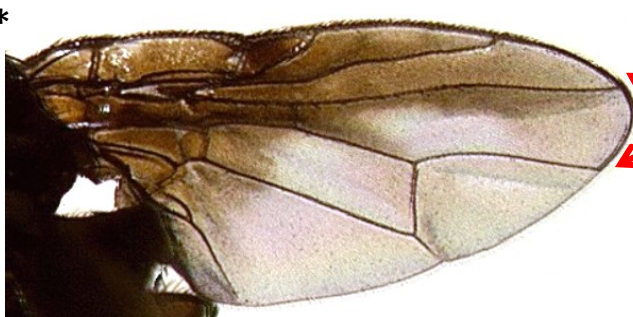
Lower half of face white or pale yellow

Wing pattern of female: cell "c" dark except two hyaline spots

Subapical crossband broadly attached to discal crossband



3



Wing of male different: infuscate on upper part and essentially hyaline on the lower part

Small, dark fruit fly (wing length 2.8-3.6 mm). A polyphagous pest known to attack fruits of numerous wild and commercial plants, including arabica and robusta coffee. The species is found throughout Sub-Saharan Africa but absent in large parts of southwestern Africa. Both sexes are attracted by protein baits and three component Biolure.

Further information see: <http://projects.bebif.be/fruitfly/taxoninfo.html?id=136> Limitation: the species sheets only show differentiation between major pest species but do not take into account similarities/differences between ALL fruit infesting tephritids in West Africa. Copyright: text G. Goergen, IITA; images G. Goergen, IITA & \*NHM, London. Acknowledgements: Thanks are due to M. De Meyer, MRAC for help provided in the conceptualization of the sheets.